



TraiNDE RT v1.4

The professional training simulator for NDE inspectors

To achieve new challenges in the frame of the digitalization of NDE training usage, **TraiNDE RT v1.4** provides new capabilities adapted to **remote training and trainee monitoring**.

TraiNDE RT “Remote”: A practical e-learning training solution

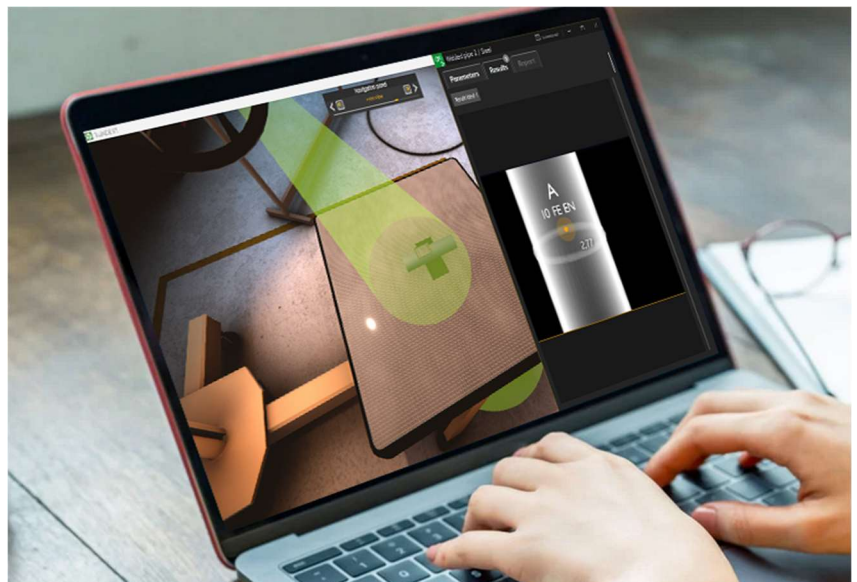
In addition to regular “in-class” training courses, NDE inspectors in the industry often need to train outside of the training center or the company to prepare exams or maintain their proficiency. Furthermore, “e-learning” NDT platforms are usually limited to theoretical training contents and illustrations.

This new “remote” option for TraiNDE RT opens the door to practical e-learning and provides **easy remote access to the TraiNDE RT training simulator on a laptop**.

This usage is fully compatible with “blended” training programs where an e-learning session is followed by in-class sessions with an NDE trainer.

Using TraiNDE RT remotely includes all the same benefits as before, and more:

- **No radioprotection issues,**
- No hardware to carry,
- Access to a **large database** of test components,
- **Unlimited practice,**
- Immediate feedback from the virtual trial,
- An “**error report**” providing self correction information to really learn from mistakes,
- Educational tools to **see the invisible** and understand better, etc.



Trainees usage monitoring

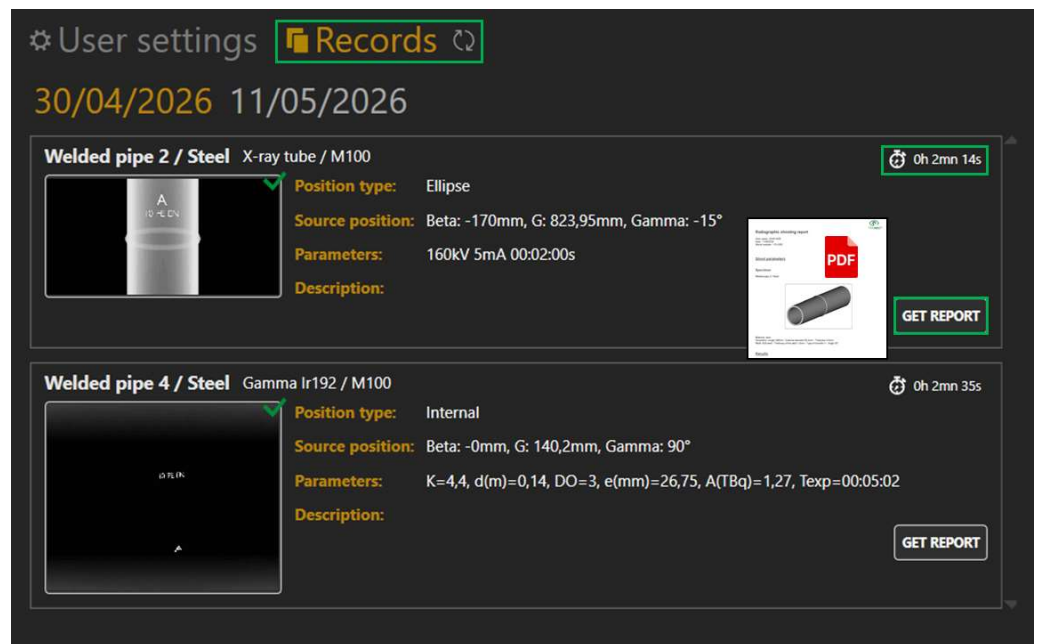
TraiNDE RT Remote automatically synchronizes with trainees' computers, providing a complete monitoring of training usage in "real time".

The following information will be recorded:

- Practice time per user,
- List of components inspected,
- Number of trials per exercise,
- Shot parameters selected by the trainees.

Trainees can fill out a digital examination report including all the information from the shot as well as their analysis of the RT virtual radiograph.

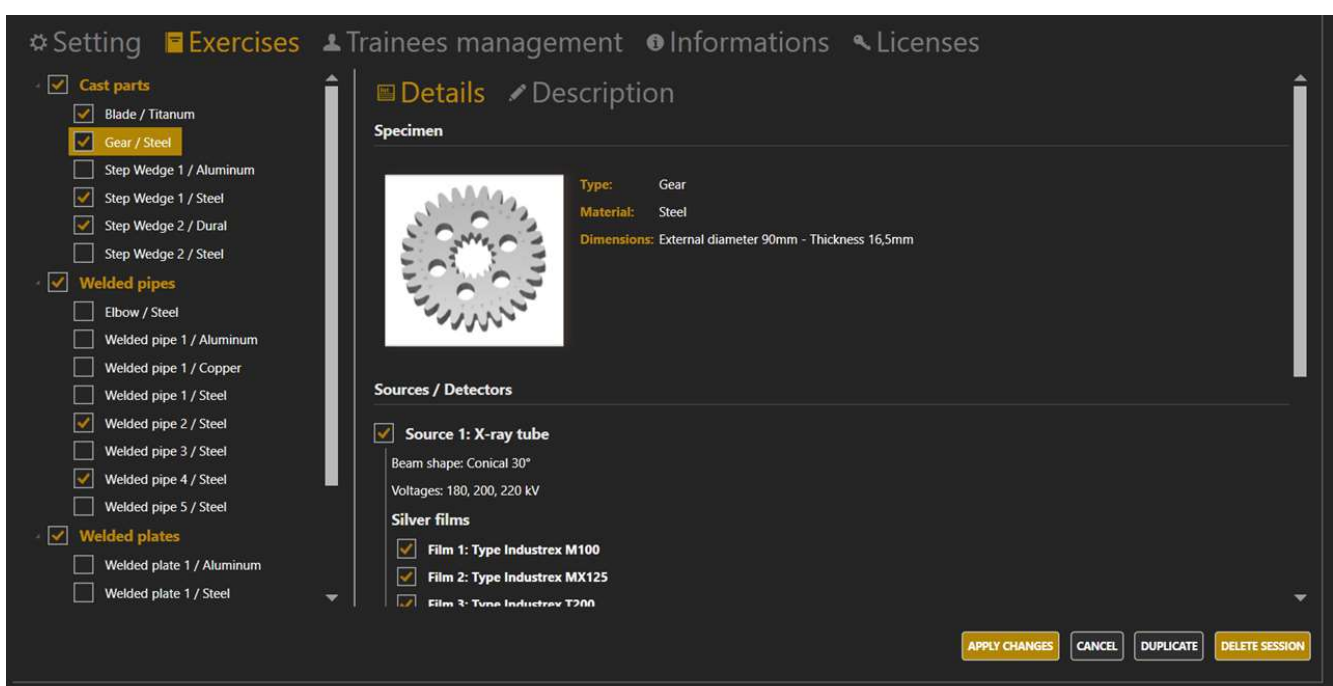
This report will also be sent automatically to the trainer when an exercise is completed.



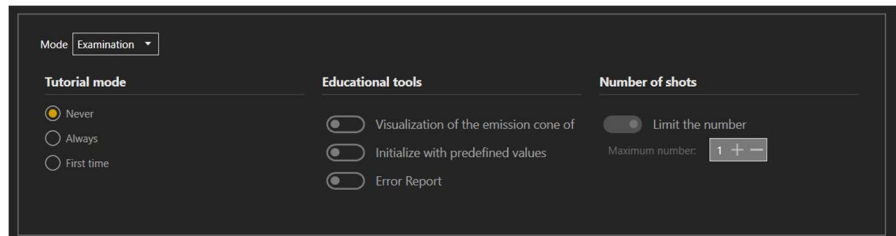
Customized training sessions

With TraiNDE RT Remote, trainers and managers can easily prepare customized training contents in advance:

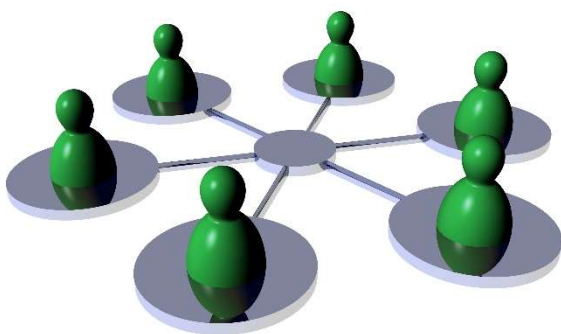
- Select the **relevant exercises** among the TraiNDE RT library (including cast parts, welded plates, welded pipes, different materials, X-Ray or gamma ray sources, etc.).



- **“Training mode” or “Exam’ mode”**: While training mode will provide **assistance tools** (instructions, source emission cone visibility, error report, predefined shot parameters), Exam’ mode will place the trainee in realistic **“blind test”** conditions,
- Ability to limit the **number of shots allowed**,
- Language, ASTM or EN IQI, units (imperial or metric).



Once defined, this “TraiNDE RT session” is simply activated on the trainee’s PC by sending a simple file:
No hardware to ship!



TraiNDE RT “Remote” is available under 2 licensing options:

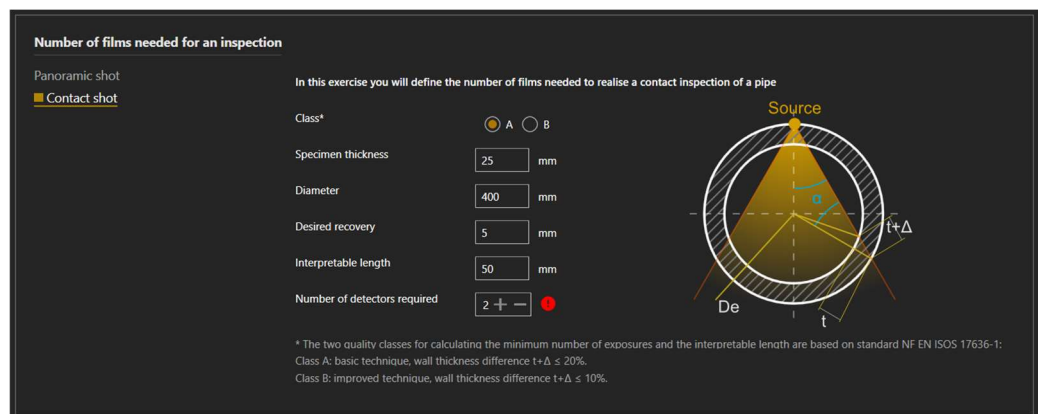
Cloud licensing:

The training organization provides limited time access to TraiNDE RT for training customers outside of the organization.

Network licensing:

This option is adapted to using TraiNDE RT within a local network configuration.

TraiNDE RT 1.4 also includes a **new educational exercise** asking the trainees to find the relevant **number of films needed** to cover an RT pipe inspection with a contact or panoramic technique.



Number of films needed for an inspection

Panoramic shot
 Contact shot

In this exercise you will define the number of films needed to realise a contact inspection of a pipe

Class* A B

Specimen thickness mm

Diameter mm

Desired recovery mm

Interpretable length mm

Number of detectors required

* The two quality classes for calculating the minimum number of exposures and the interpretable length are based on standard NF EN ISO 17636-1:
 Class A: basic technique, wall thickness difference $t+\Delta \leq 20\%$,
 Class B: improved technique, wall thickness difference $t+\Delta \leq 10\%$.

More information on the features of **TraiNDE RT** is available on <http://trainde.extende.com/>

You can also visit our YouTube channel, including a playlist for everything related to **TraiNDE RT**:



<https://youtube.com/playlist?list=PLF7b8feEUKf2YwQUgTbp8yu9uT3hdLN4G&si=NrAFIhgucAd3aYIN>