



## **TraiNDE RT v1.3**

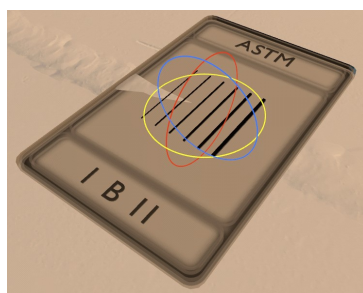
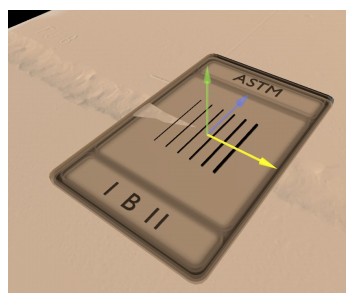
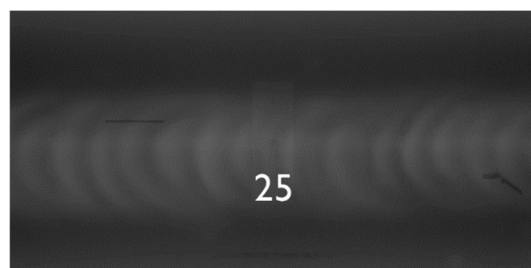
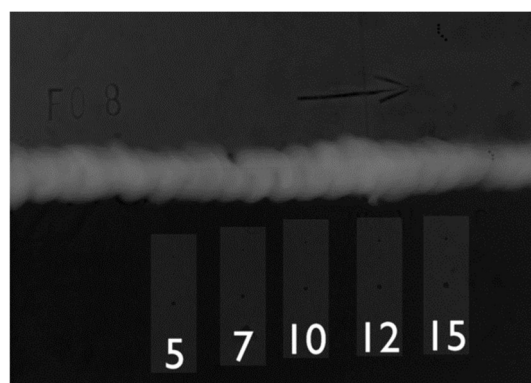
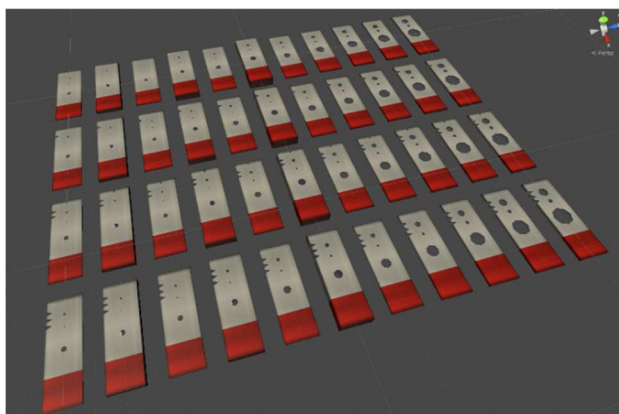
*The virtual and innovative training tool for NDE inspectors*

We are happy to announce the release of TraiNDE RT v1.3, the newest version of the unique RT training simulator.

**TraiNDE RT v1.3** integrates the plaque type IQI (ASTM E1025 standard), as well as ergonomic improvements.

### **Hole type penetrameters from ASTM E1025 standards**

In response to customer requests, we have added the possibility to model american hole type IQIs in certain cases.



### **Improvements**

Other notable improvements include the fluidity and robustness of the connection between the virtual reality headset and the computer, and object manipulation in the PC version.