



TrainDE UT v1.4

The first virtual mock-up for NDE inspectors

Incorporating feedback from our users, EXTENDE proudly releases a new and enhanced version of **TrainDE UT**. This release of **TrainDE UT** is the most powerful and realistic version yet!

Enhanced Realism:

Newly designed **dummy probes** and optimization of the probe detection algorithm significantly improve the smoothness of signal response.



Enriched Features and Intuitive Design:

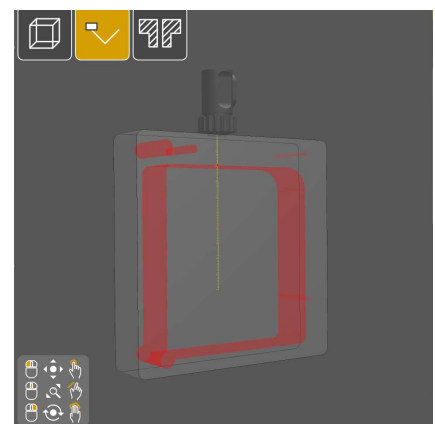
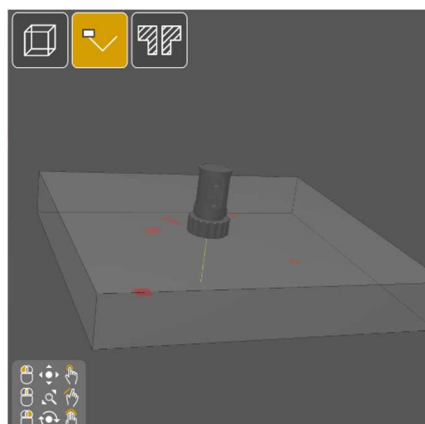
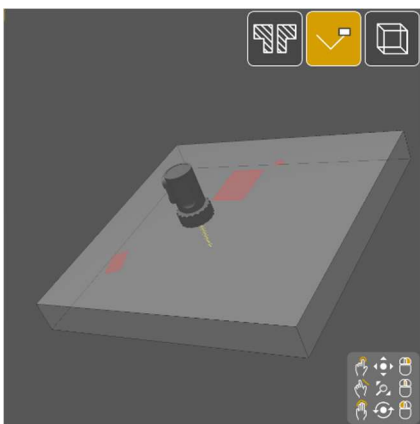
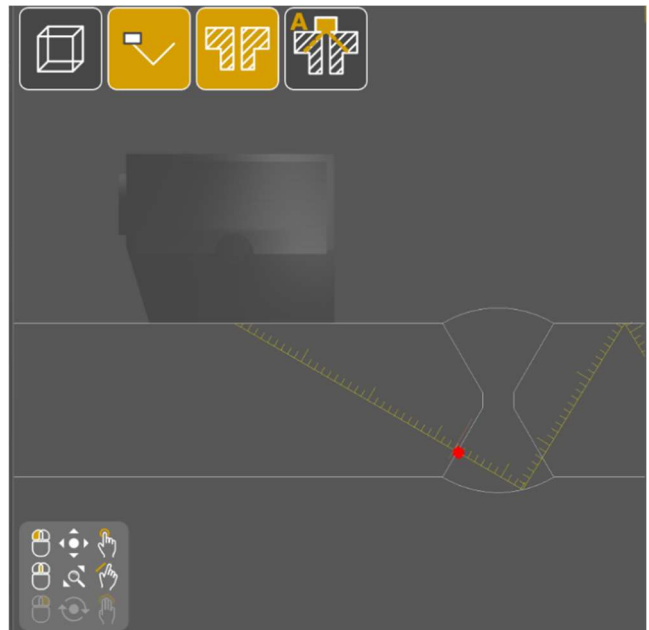
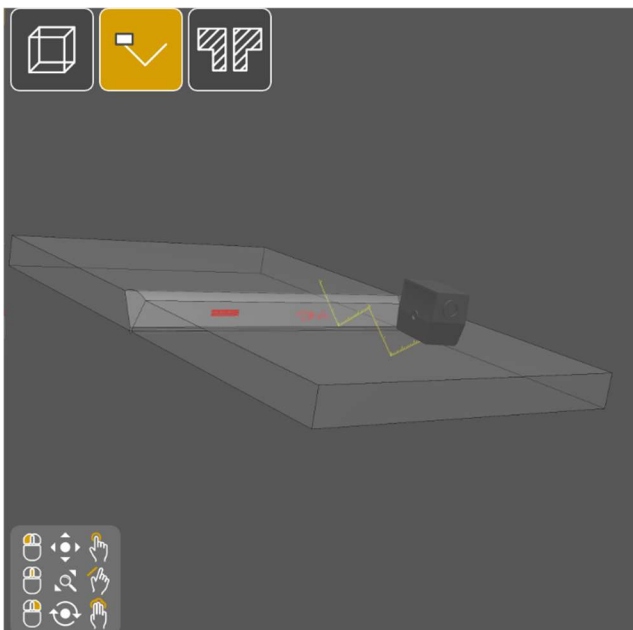
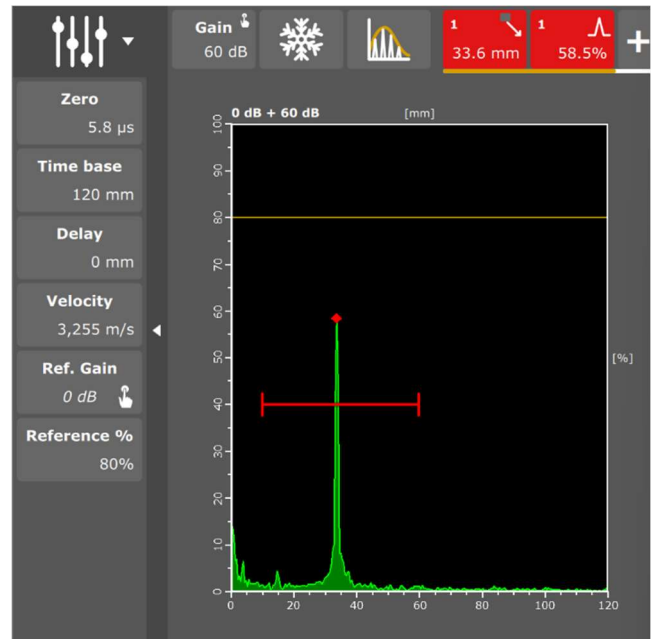
The entire menu organisation and user interactivity have been re-designed to create a **more modern and intuitive environment**.

Experience a new dimension of training with the introduction of a **3D view** of the whole scene.

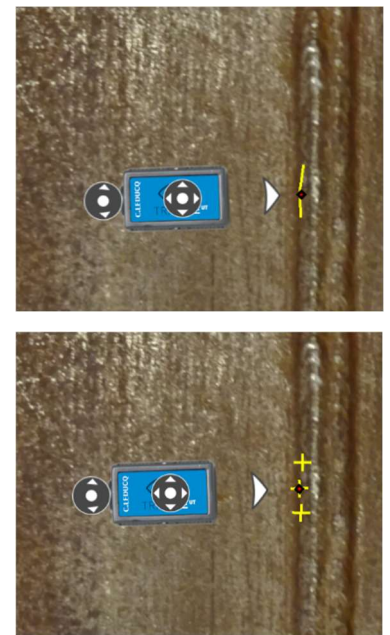
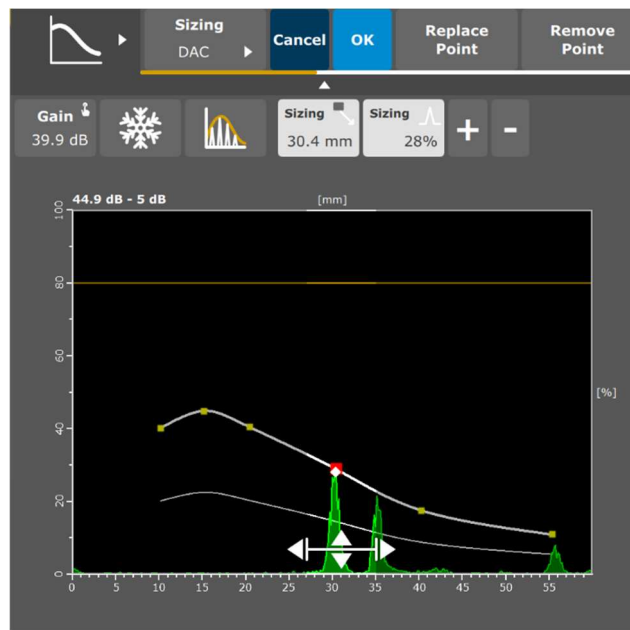
The **section view** is synchronized with the 3D view and provides a better understanding of physical phenomena with extended **ray tracing** (multiple skips, distance measurements, etc.).

Visualize flaws for all specimens in a variety of perspectives. Whether in the mock-up display, the section or the 3D view, trainees can easily visualize the interaction between sound path and flaws, thus better understanding how to perform a good inspection.

The creation of **DAC curves** is more intuitive (sliding gate, possibility to delete specific points, etc.).

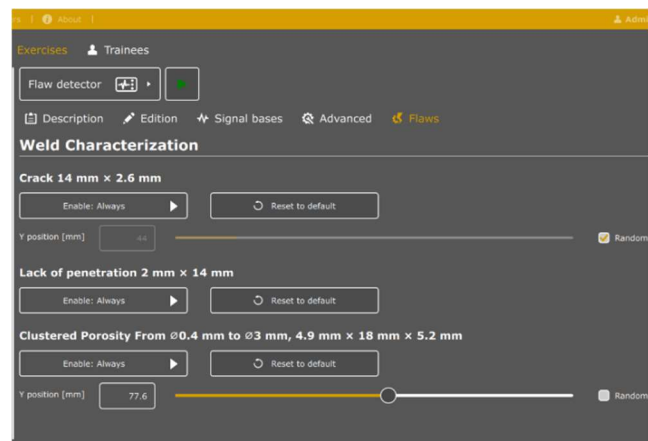
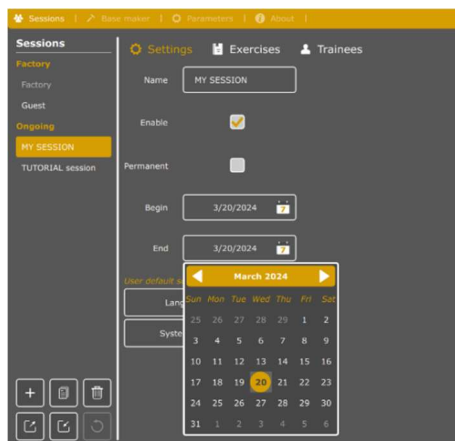


Indications marking and measurement tools mimic inspector practices. Setting up the **zone coverage** exercise is easy. Other features of the device have been enriched (signal auto set-up at 80% screen height, more gates available, several signal display options available, etc.).



Complete and flexible « user sessions » management:

To facilitate organization of the courses for the trainer, it is now possible to advance prepare temporary or permanent « **sessions** ». For each session, a **custom** set of exercises is defined with specific settings (display or not of the flaws, the section views, the ray tracing, etc.). With enhanced **flaw customization**, multiplying on demand the number of cases available is now even better! (Extended to other exercises, more intuitive settings for the trainer, flaw modifications instantly visible in the different views, etc.).



The **realism** of several exercises is improved (adjustment of flaw positions, correction of signals “jumps”, thinner resolution for probe positions, etc.).

Expand your available exercises:

TraiNDE UT is delivered with the pack “Weld & Plates 1” including about 15 exercises. Two additional packs are also available for purchase (“Blind Blocks”, “Weld & Plates 2” composed of additional plates and welds including one Tee weld). If you don’t already have them, a modification of your license will expand your access to these optional cases! With **TraiNDE UT**, more virtual test blocks, same small storage needs!

More information is on the **TraiNDE UT** features are available on: <http://trainde.extende.com/>

You can also visit our YouTube channel, including a playlist for everything related to **TraiNDE UT**: <https://www.youtube.com/playlist?list=PLF7b8feEUKf2C88iAb7XBqFGpYcNdCJM0>

